

List 1: Information about Higher Education Institutions

List 1: No.1 (1.11) Systems and facilities or support the education or learning of students for those who need special assistance

(1.11.1) Classrooms

(1.11.2) Facilities system for the disabled

(1.11.3) Scholarships

*Guideline and Responsible Person(s)*

|  |  |
|--|--|
| Required period of data/information                        | Within sixty days from the end of the academic year, disclosed at least once a year.   |
| Explanation and guidelines for data/information disclosure | <p><b>(1) Information on the number of classrooms laboratories, laboratories, simulation laboratories, dormitories, and libraries</b></p> <p><b>(2) Facilities for learners who require special assistance:</b> Show information on facilities for learners who require special assistance, such as</p> <ol style="list-style-type: none"> <li>1. Facilities for disabled people in public areas such as walkways, ramps, handrails, elevators, signs, parking spaces, and bathrooms for disabled people.</li> <li>2. Educational support services that help students with disabilities have access to the teaching and learning systems of higher education institutions with quality and equality with general students</li> </ol> <p><b>(3) Providing grants and assistance to higher education institutions to support learners who require special assistance at higher education institutions.</b></p> |
| Responsible person(s)                                      | Gloria/Wendy/Jamie/Kanun/Natee   |

## *Data Disclosure*

Below is the data that will be disclosed on the Stamford website.

### **1.11 Systems and facilities or support the education or learning of students for those who need special assistance**

(1) Information on the number of classrooms Laboratories, laboratories, dormitory simulation laboratories, and libraries.

Rama9 campus:

- Building 1: 24 of 40 seats classroom
- Building 2: 11 of 40 seats classroom, 6 of 24 seats classroom

Cha-Am campus:

- Building 1: 3 of 40 seats classroom, 9 of 50 seats classroom, 1 of 120 seats classroom
- Building 2: 6 of 40 seats classroom, 1 of 100 seats classroom
- Dormitory: 83 rooms/dorm x 4 dorms = 332 rooms

Asoke learning center:

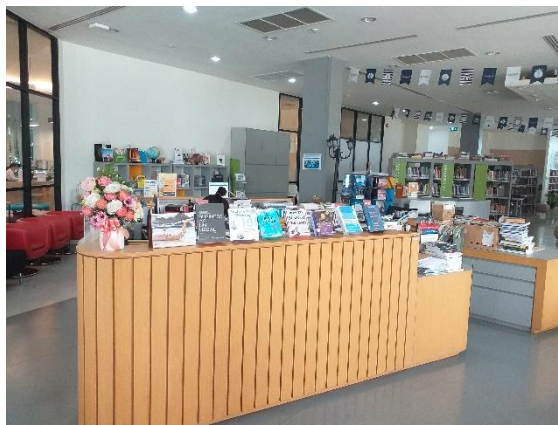
- 9 of 24 seats classroom, 2 of 10 seats classroom 27

At Rama 9 Library, we have 21PCs to provide for our students to do assignments, study and do research. With full installation promptly to access and surf on the internet, the students can collect data from worldwide resources. In case of any problems, the IT help desk is on duty to help our students next door.

At Asoke Campus, all students have their own computers or devices to study. We provide power plugs around the front area and on the main table in the library. Available with Wi-Fi signal and land line system also the IT help desk support and assist the students.

The Cha-Am library has 6 PCs and UPS with up-to-date software available for all users, each of which can be connected to the university's LAN system, along with an uninterruptible power supply to serve students. And every PCs have a licensed program such as Adobe Acrobat Pro for document management and SPSS Statistics, a program that helps analyze statistical data into various formats such as tables, charts or graphs. We have a librarian available to help with research during working hours.

As well as the library has access points for Wi-Fi and LAN cable available to all users. Including the school building 1 and building 2, there is generator which is a power backup system in case of an emergency power outage.



## Mac Lab



## Canteen & vending machines







### 1.11.2 Facilities system for the disabled

University, we have defined and implemented environmental, health, and safety standards to ensure a safe and healthy environment for our community. We also provide access for people with special needs, including accommodation and resources to support their academic and personal success.

The faculty welcomes applications from students with disabilities or chronic illness and treats them on the same academic grounds as those from other candidates. There is an Access Guide available, which outlines the provision for wheelchair users and those with sensory disabilities in departments through the help of the Nurse on duty in the University and intended as a preliminary guide. The faculty will make every effort to ensure accessibility to the physical environment of the faculty and to facilities and equipment to disabled students, such as computers and library resources, if they make their needs known.

(2) Providing funding and assistance from higher education institutions to support students in higher education institutions.

### 1.11.3 Scholarships

#### **Engagement Department:**

Currently, we do not have a scholarship program specifically for students with special needs.

#### **Admission Department:**

The university supports student enrollment and provides financial assistance through the following methods:

##### **A. Enrollment Support:**

1. Academic Excellence Scholarships: Full or partial tuition scholarships are awarded to students with outstanding academic performance, encouraging top students to enroll.
2. First-Step Scholarships: High-value scholarships are offered to students recommended by specific feeder schools, helping them reduce tuition costs.
3. Early Bird Discounts: Students who enroll early receive tuition discounts, lowering the cost of enrollment.

4. Referral Discounts: Additional enrollment discounts are available through referrals by current students, staff, and friends, increasing enrollment incentives.

**B. Financial Support:**

1. Full and Partial Tuition Scholarships: Scholarships cover either partial or full tuition fees based on academic performance and specific criteria.
2. High-Value Scholarships: Initial scholarships range from 50,000 THB to 100,000 THB, along with full or partial tuition coverage for specific programs.
3. Activity and Referral Discounts: Graduate students participating in university events and referrals by existing students and staff receive tuition discounts ranging from 5,000 THB to 15,000 THB.
4. Long-Term Support: Some scholarships and discounts are distributed over multiple terms, providing ongoing financial support.
5. Special Discounts: Family members, alumni, government officials, and individuals from specific professions receive tuition discounts ranging from 10% to 30%.